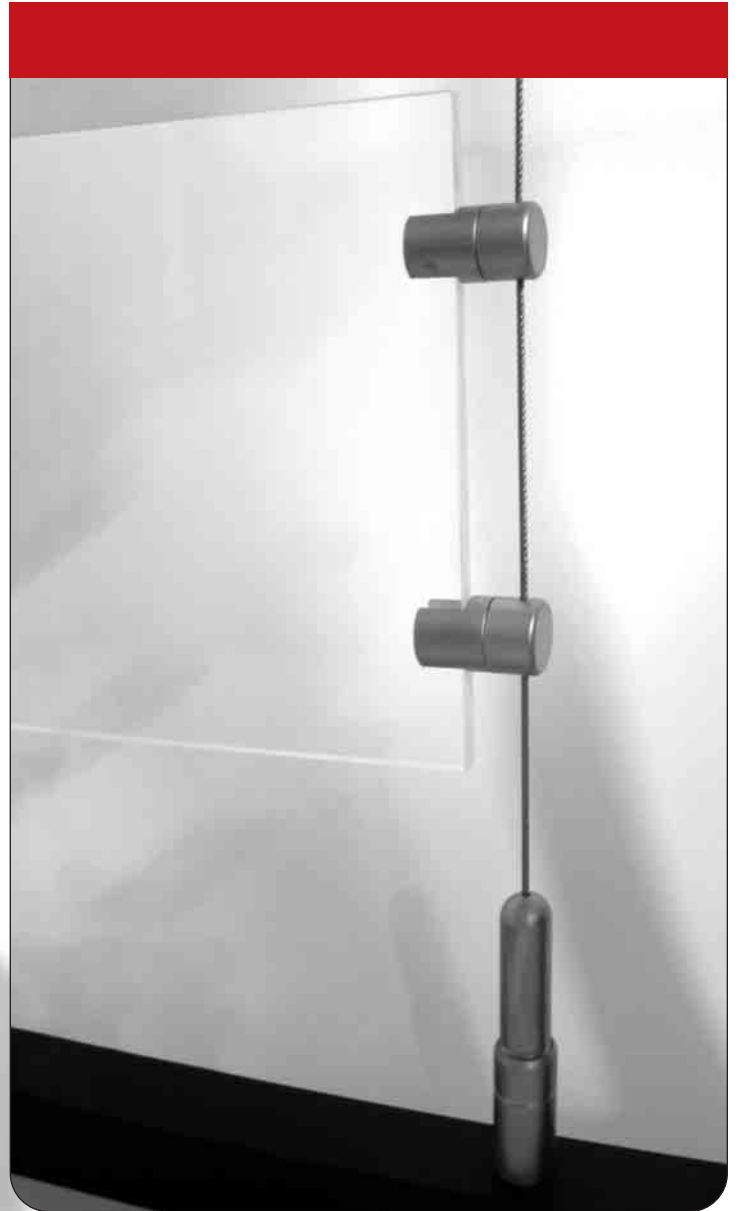
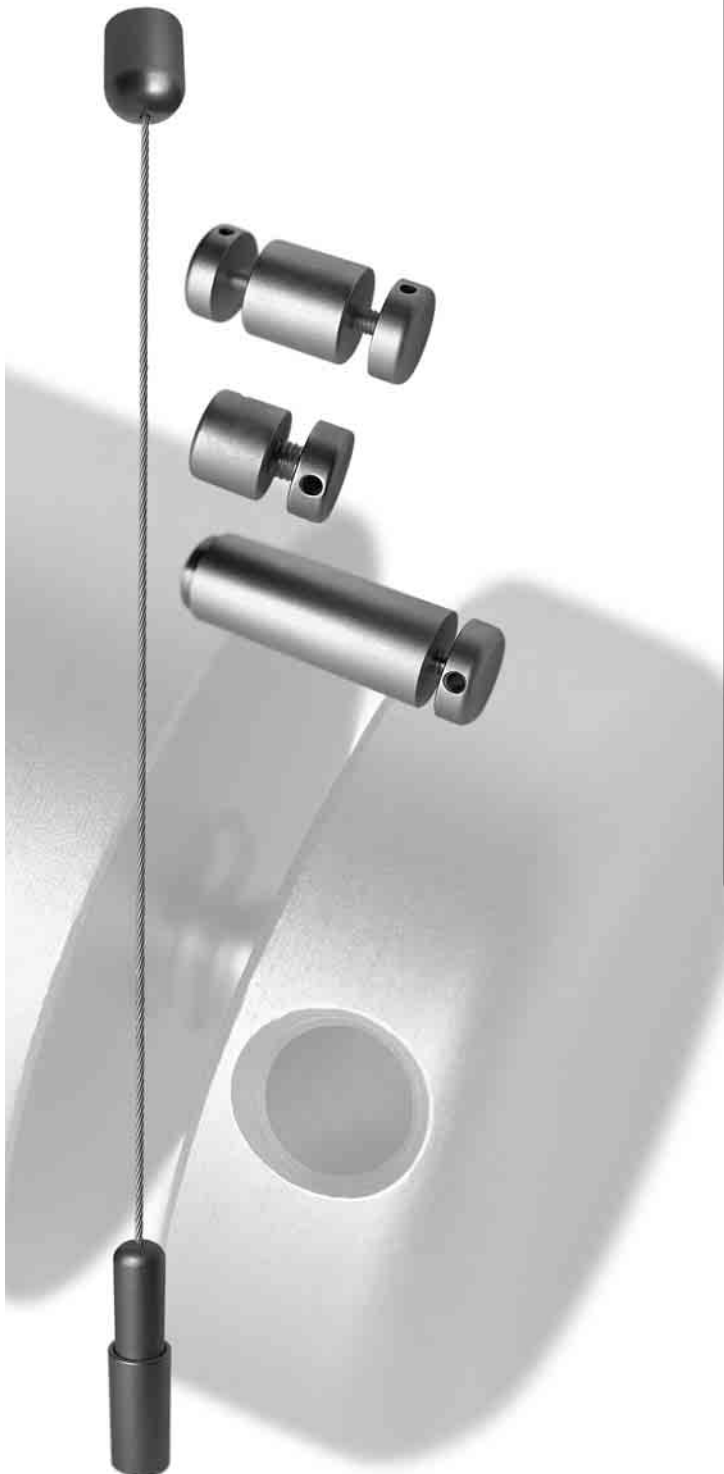


ShopCable™

Retail graphic and
product display



FREE CALL 1800 606 682

Sydney Office

8 Guihen St, Camperdown NSW 2050

Melbourne Office

146 Dudley St, West Melbourne VIC 3003

Brisbane Office

58 McLachlan St, Fortitude Valley QLD 4006

Canberra Office

61 Kembla St, Fyshwick ACT 2609

ShopCable™

Cable Systems (complete assembly)



ShopCable™ is a graphic and product display system with a wide range of uses. It is available in floor to ceiling, wall to floor and wall to wall configurations.

ShopCable™ can be used to showcase and present products, signs and graphic panels. Used in conjunction with our Tuffline™ system, changing graphics has never been easier.

Contact your local distributor for further information or for additional products to enhance your retail environment.

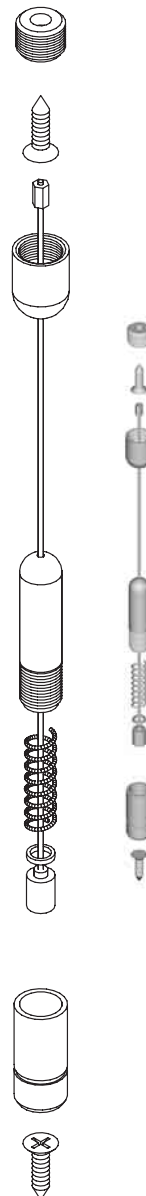
1. SKCo1 Floor to ceiling

COMPLETE ASSEMBLY. 4m long cable with ceiling to floor fittings including spring tensioning. Finish: Satin

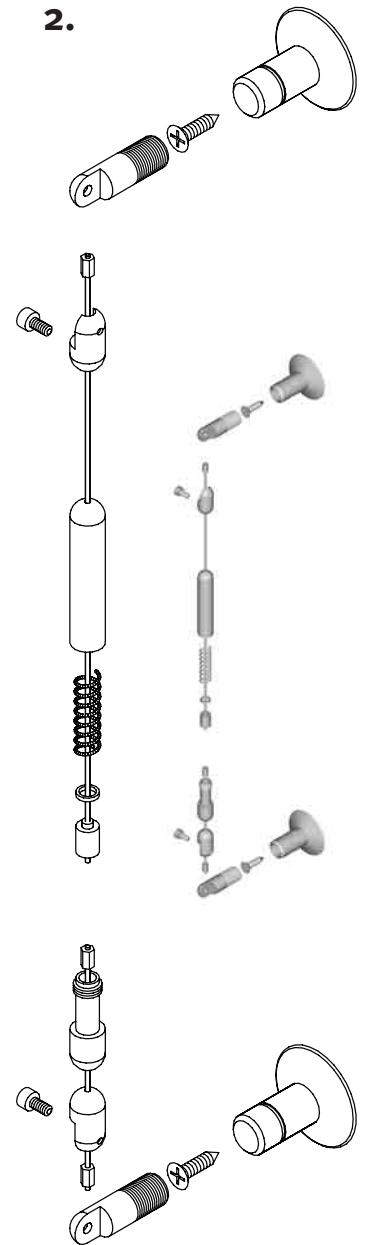
2. SKCo2 Wall to wall (swivel connector)

COMPLETE ASSEMBLY. 4m long cable with wall to wall swivel supports including spring tensioner. Finish: Satin

1.



2.

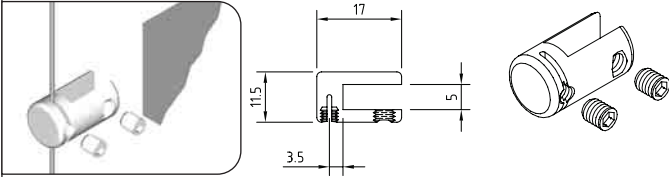


Retail graphic and product display

Cable System Accessories

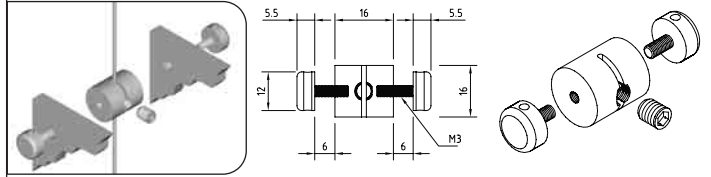
SKCo3 Vertical panel support-single

For panels up to a maximum of 4mm thick. Finish: Satin



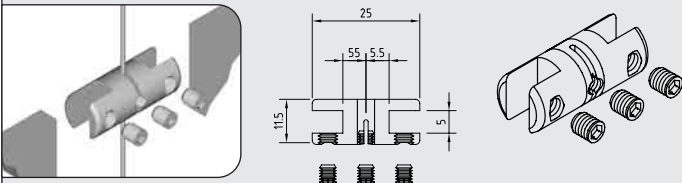
SKCo8 Panel support (for panels with holes)-double

As SKC07



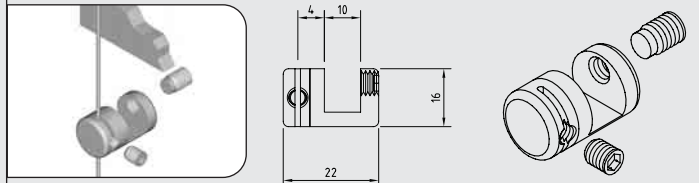
SKCo4 Vertical panel support-double

For panels up to a maximum of 4mm thick. Finish: Satin



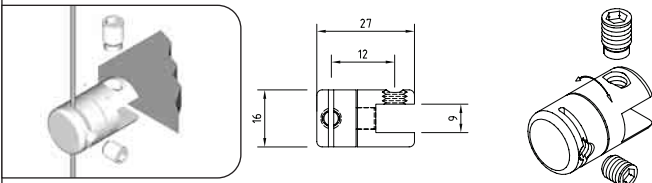
SKCo9 Top/bottom panel support-single

For panels up to a maximum of 9mm thick that are wider than the distance between the cables. Finish: Satin



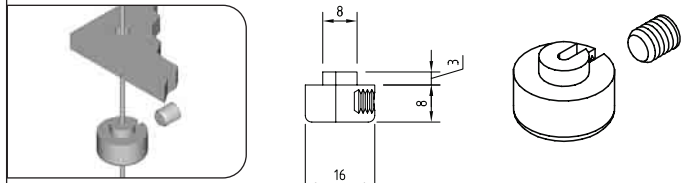
SKCo5 Multi directional panel support-single

For panels up to a maximum of 8mm thick. Can be locked at varying angles. Finish: Satin



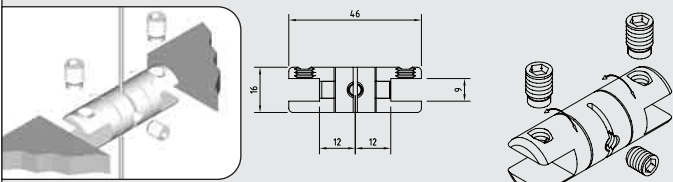
SKC10 Shelf support

For use with shelving. Locates under shelf to provide support. Shelf requires hole. Drill hole 10mm. Finish: Satin



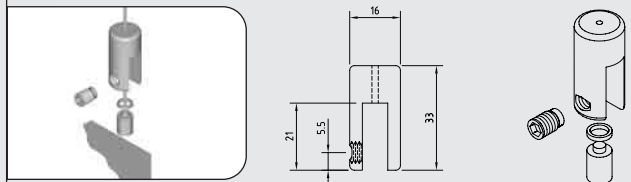
SKCo6 Multi directional panel support-double

For panels up to a maximum of 8mm thick. Can be locked at varying angles. Finish: Satin



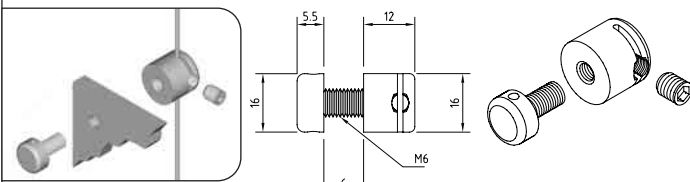
SKC11 Top edge panel support

Top edge grip, for suspending panels from end of cables. Finish: Satin



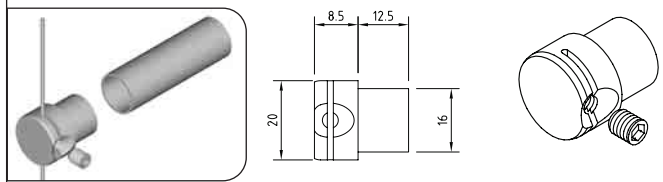
SKCo7 Panel support (for panels with holes)

For panels up to a maximum of 6mm thick with a 6mm diameter hole. Finish: Satin



SKC12 Tube support

For use with 19mm hollow stainless steel tube. Finish: Satin

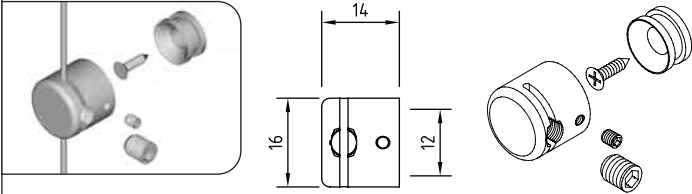


ShopCable™

Cable System Accessories & Wall Mount System Accessories

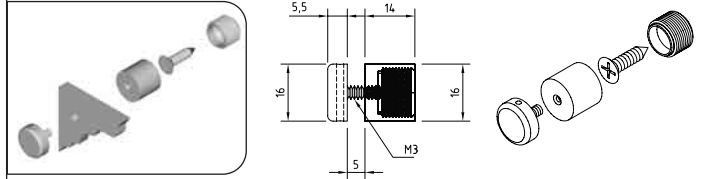
SKC13 Single support with boss

For use with lightboxes or panels. Finish: Satin



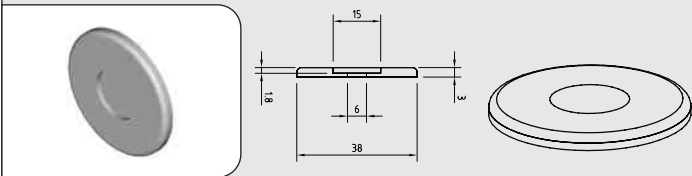
SKW04 Medium sign support

For panels up to a maximum of 7mm with a hole size of 4mm. Finish: Satin



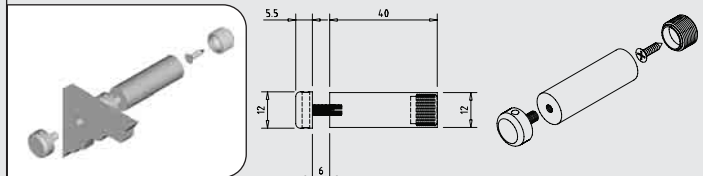
SKC14 Decorative disc

For use with any floor, ceiling or wall fitting



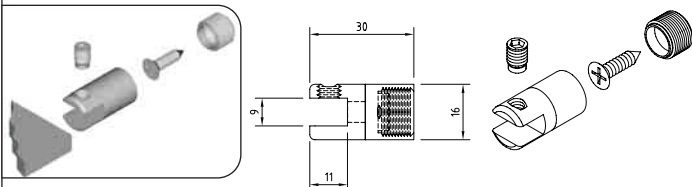
SKW05 Small long sign support

For panels up to a maximum of 6mm with a hole size of 4mm. Finish: Satin



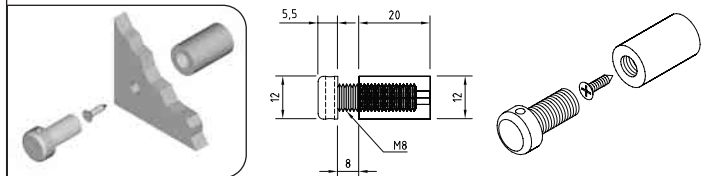
SKW01 Multi direction shelf/panel support

Wall mount shelf/panel support. Takes up to 8.5mm slot/panel thickness. Finish: Satin



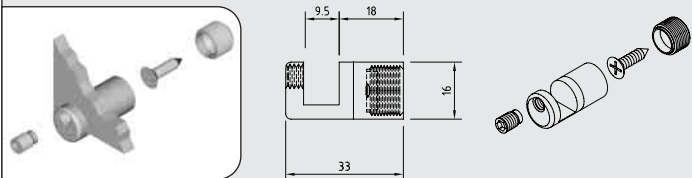
SKW06 Small short sign support

For panels up to a maximum of 12mm thick with a hole size of 8mm. Finish: Satin



SKW02 Multi pivot panel support

Wall mount panel support for panels up to a maximum of 9mm in thickness. Finish: Satin



SKW03 Large sign support

For panels up to a maximum of 20mm thick with a hole size of 8mm. Finish: Satin

