



## Hilite Snap™

### Slimline lightbox

The Hilite Snap™ not only highlights your product but allows for easy, regular changeover of images to keep your message fresh.

#### Features & benefits:

- Snap-frame makes changing the image very quick and easy.
- No front panel means that reflections are reduced.
- Image is satin laminated to reduce reflections and protect the image.
- Edgelit panel provides bright and even illumination over entire image area.
- Slimline, 38mm frame
- Low heat emission
- Can be wall or suspension mounted

#### Available sizes:

Standard: A2, A1, A0.

Other sizes available on request.

Single (40mm thick) or double sided (50mm thick) units available. Can be mounted portrait or landscape.

#### Frame

Satin natural anodized aluminum frame

#### Ideal Applications

Menuboards, directional signage, product information, independent advertising units in retail and pharmaceutical outlets

**FREE CALL 1800 606 682**

#### Sydney Office

8 Guihen St, Camperdown NSW 2050

#### Melbourne Office

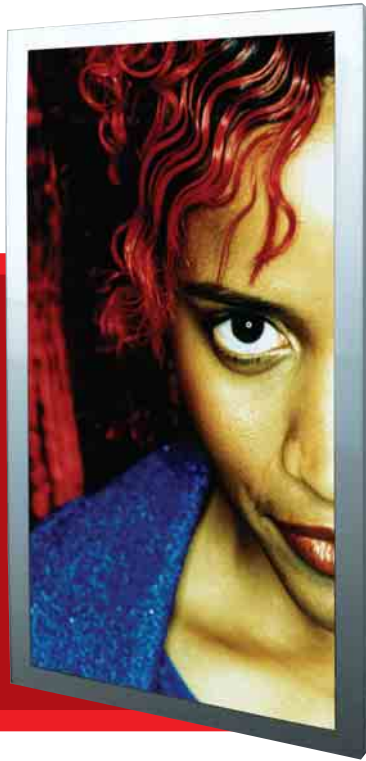
146 Dudley St, West Melbourne VIC 3003

#### Brisbane Office

58 McLachlan St, Fortitude Valley QLD 4006

#### Canberra Office

61 Kembla St, Fyshwick ACT 2609



## Hilite Peel™

### Slimline lightbox

The slim lines and even illumination of the Hilite Peel™ will enhance your image or message in any environment.

#### Features & benefits:

- Clear peel face acrylic front panel allows for easy access to change over image
- Image is held in place magnetically against the front face.
- Edgelit panel provides bright and even illumination over entire image area — no “banding” or “lightbars” as per conventional units
- Slimline, 40mm frame
- Low heat emission
- Can be wall, recessed or suspension mounted

#### Available sizes:

Standard: A2, A1, A0.

Other sizes available on request.

Single (40mm thick) or double sided (50mm thick) units available. Can be mounted portrait or landscape.

#### Frame

Satin natural anodized aluminum frame.

Powder-coat colours and special finishes available on request.

#### Ideal Applications

Menuboards, directional signage, product information, promotional signage.

**FREE CALL 1800 606 682**

#### Sydney Office

8 Guihen St, Camperdown NSW 2050

#### Melbourne Office

146 Dudley St, West Melbourne VIC 3003

#### Brisbane Office

58 McLachlan St, Fortitude Valley QLD 4006

#### Canberra Office

61 Kembla St, Fyshwick ACT 2609



## Hilite Edge Glow™ Slimline lightbox

Let Hilite Mini Glow™ bring your product to life. The illuminated image within this unit is enhanced by a glowing clear acrylic frame, creating a unique selling point.

### Features & benefits:

- Lightweight with easy plug and play install makes this point of sale unit very versatile
- Can be wall or suspension mounted, or used as a counter display.
- 28mm distance from wall to face when wall mounted.
- Low heat emission
- Mounting template available

### Sizes available

A4 and A3

### Standard border colour

Silver

### Ideal Applications

Menuboard, directional signage, product information, independent advertising units in retail and pharmaceutical outlets

**FREE CALL 1800 606 682**

#### Sydney Office

8 Guihen St, Camperdown NSW 2050

#### Melbourne Office

146 Dudley St, West Melbourne VIC 3003

#### Brisbane Office

58 McLachlan St, Fortitude Valley QLD 4006

#### Canberra Office

61 Kembla St, Fyshwick ACT 2609



## Hilite Tuffline™ Slimline lightbox

The Hilite Mini Frame™ not only highlights your product but allows for easy, regular changeover of images to keep your message fresh.

### Features & benefits:

- Clear peel face acrylic front panel allows for easy access to change over image – previously unavailable in these sizes.
- Lightweight unit with easy plug and play install makes this point of sale unit very versatile
- Edgelit panel provides bright and even illumination over entire image area.
- Slimline - 28mm frame
- 36mm distance from wall to face when wall mounted.
- Low heat emission
- Can be wall or suspension mounted

### Available sizes:

A4 and A3

### Standard border colours available

black and silver

### frame

Satin natural anodized aluminum frame

### Ideal Applications

Menuboard, directional signage, product information, independent advertising units in retail and pharmaceutical outlets

**FREE CALL 1800 606 682**

#### Sydney Office

8 Guihen St, Camperdown NSW 2050

#### Melbourne Office

146 Dudley St, West Melbourne VIC 3003

#### Brisbane Office

58 McLachlan St, Fortitude Valley QLD 4006

#### Canberra Office

61 Kembla St, Fyshwick ACT 2609